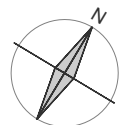


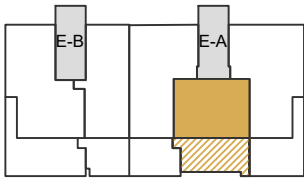
01



SUPERFICIES CONSTRUIDAS	
Sup. Construida vivienda	128,00 m ²
Sup. Construida terrazas	45,00 m ²
TOTALES	173,00 m²

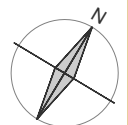
Jardín	55,20 m ²
--------	----------------------





SUPERFICIES CONSTRUIDAS	
Sup. Construida vivienda	84,00 m ²
Sup. Construida terrazas	42,00 m ²
TOTALES	126,00 m²

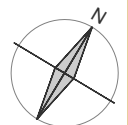
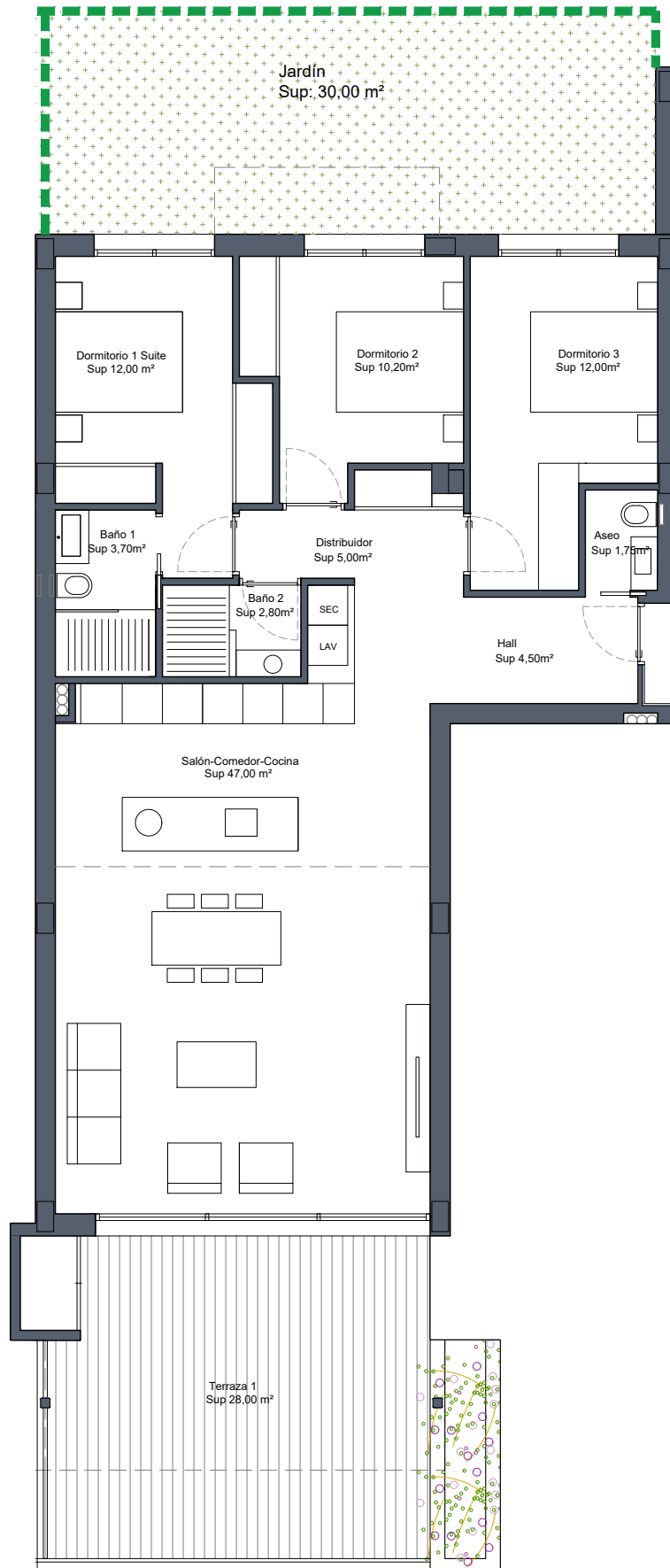
02

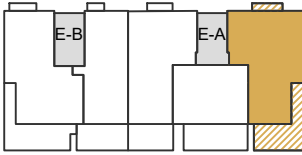




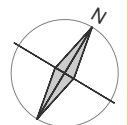
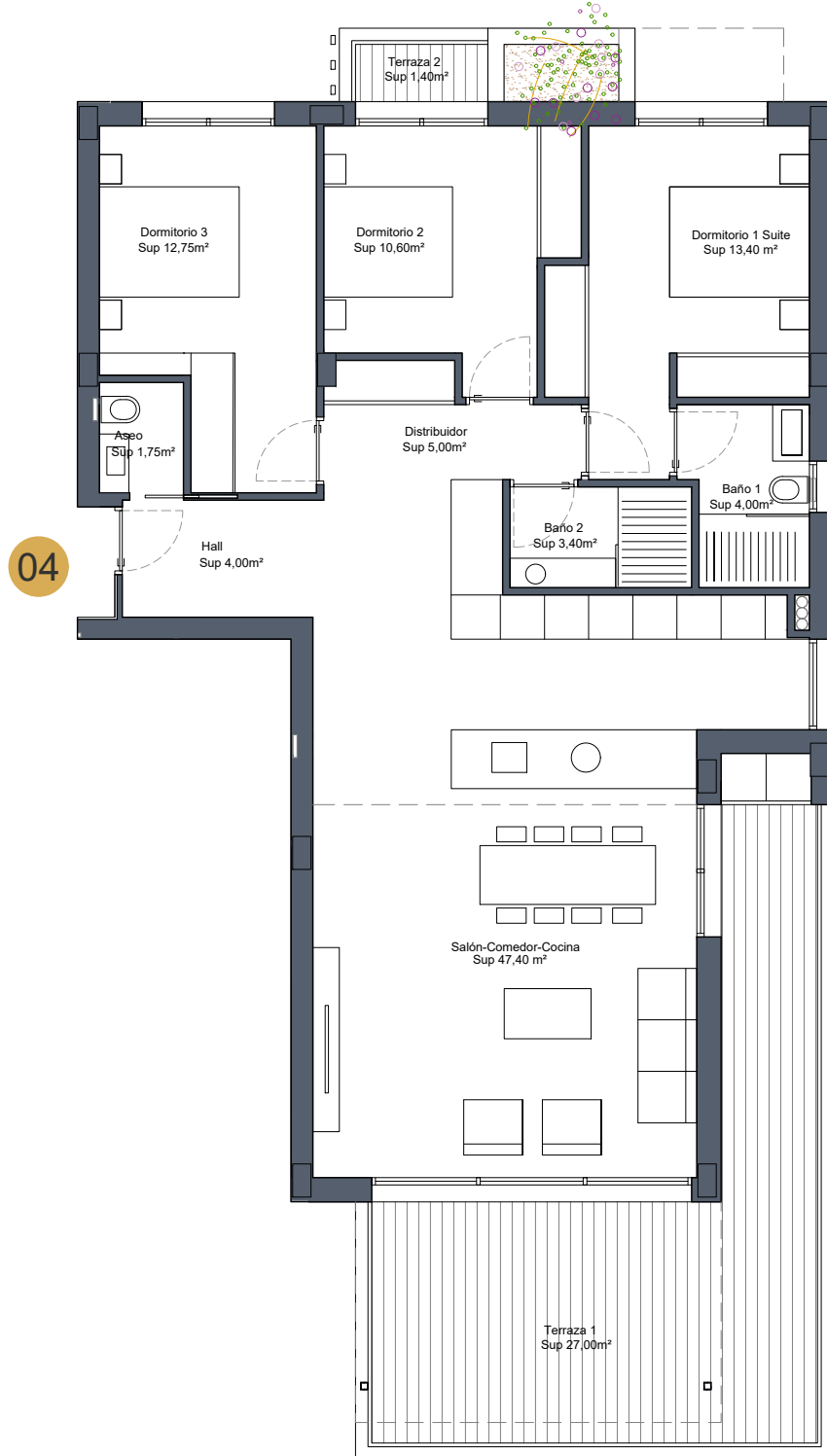
SUPERFICIES CONSTRUIDAS	
Sup. Construida vivienda	118,00 m ²
Sup. Construida terrazas	33,00 m ²
TOTALES	151,00 m²

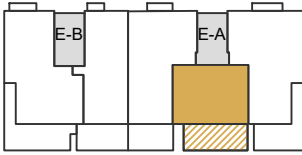
Jardín	30,00 m ²
--------	----------------------





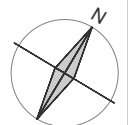
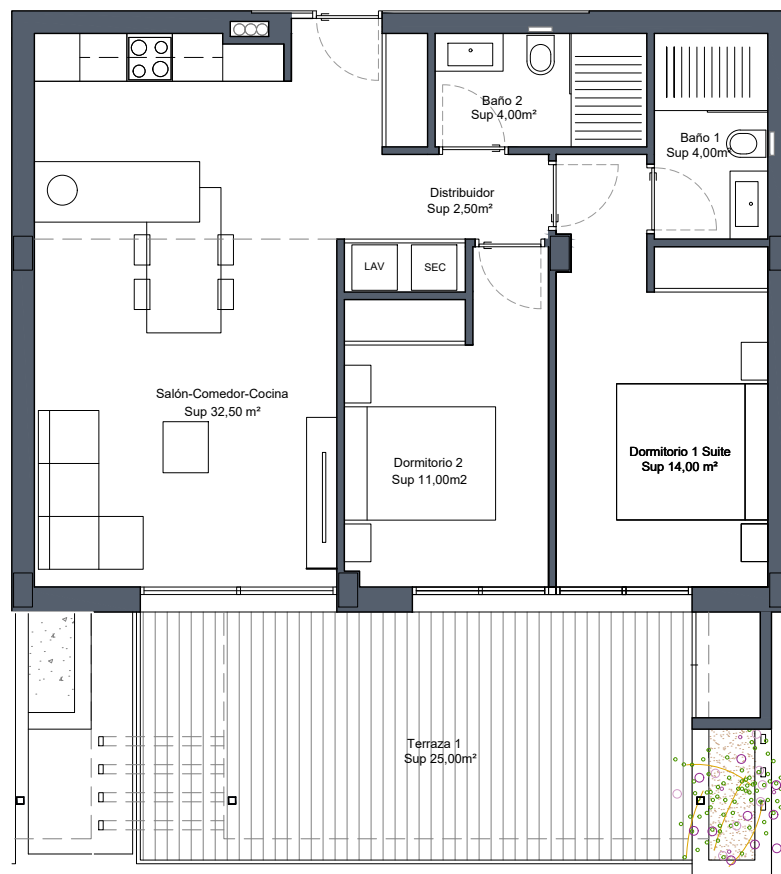
SUPERFICIES CONSTRUIDAS	
Sup. Construida vivienda	128,00 m ²
Sup. Construida terrazas	33,50 m ²
TOTALES	161,50 m²





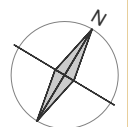
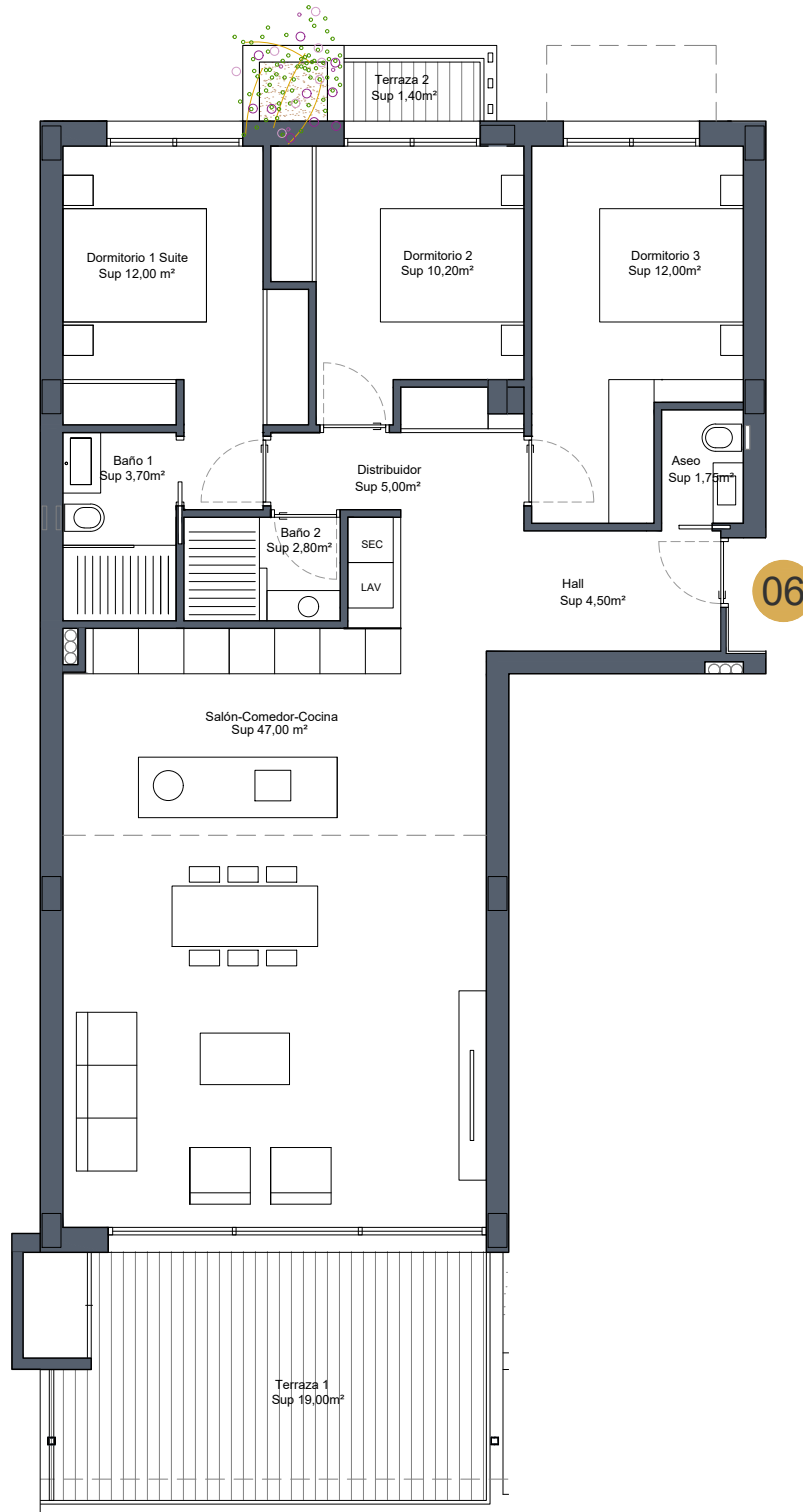
SUPERFICIES CONSTRUIDAS	
Sup. Construida vivienda	84,00 m ²
Sup. Construida terrazas	29,00 m ²
TOTALES	113,00 m²

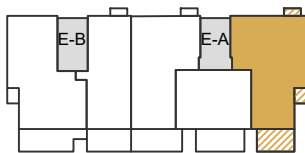
05



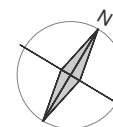


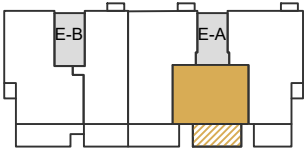
SUPERFICIES CONSTRUIDAS	
Sup. Construida vivienda	118,00 m ²
Sup. Construida terrazas	23,00 m ²
TOTALES	141,00 m²





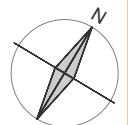
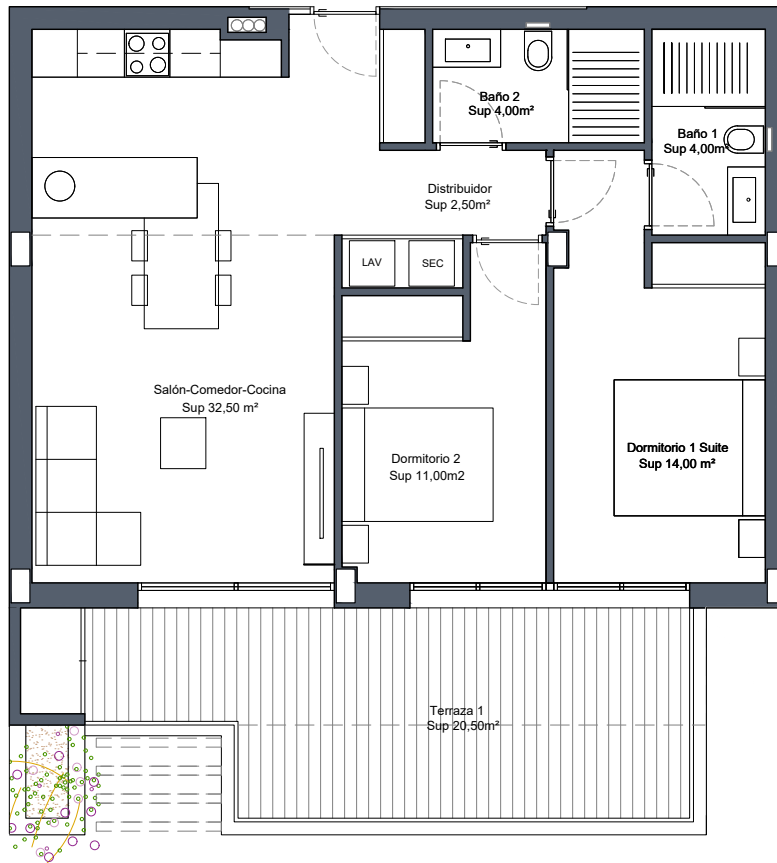
SUPERFICIES CONSTRUIDAS	
Sup. Construida vivienda	128,00 m ²
Sup. Construida terrazas	20,00 m ²
TOTALES	148,00 m²





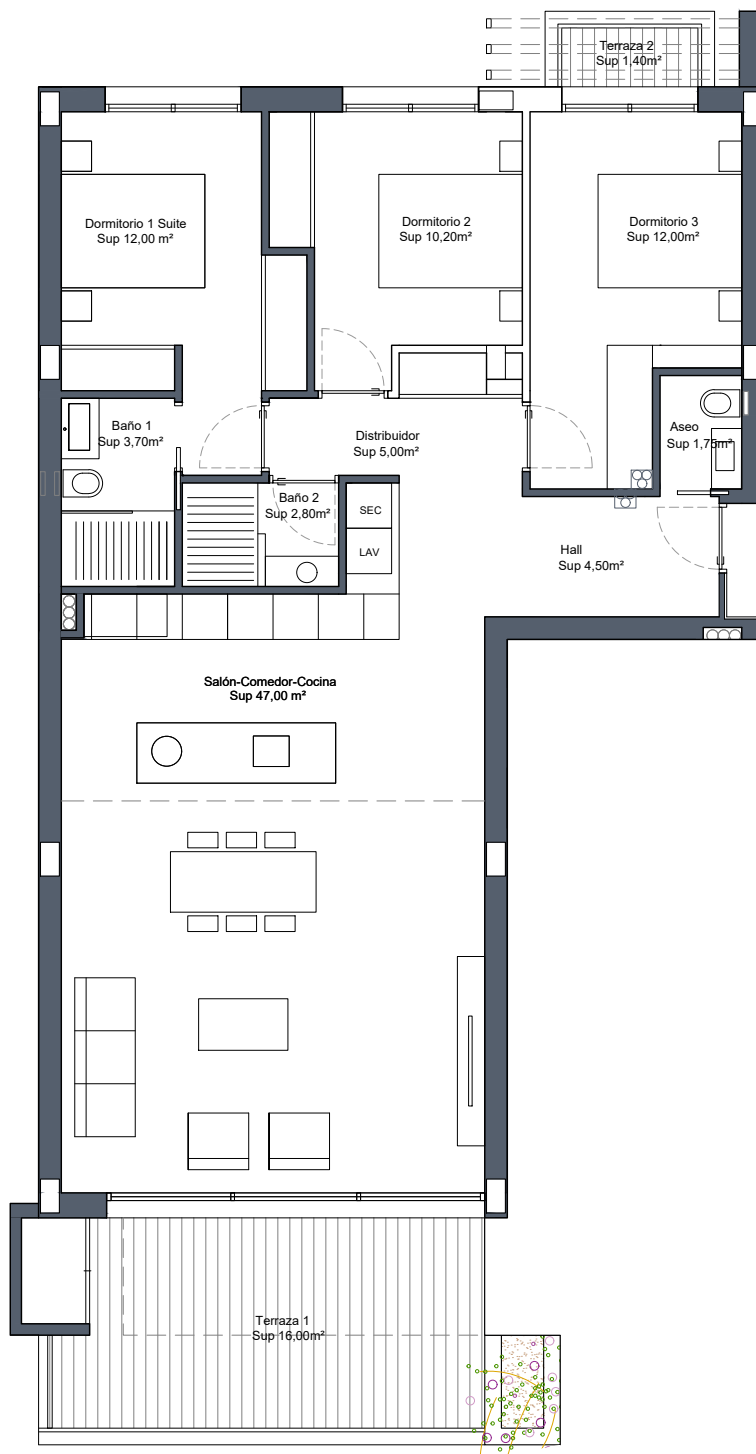
SUPERFICIES CONSTRUIDAS	
Sup. Construida vivienda	84,00 m ²
Sup. Construida terrazas	23,00 m ²
TOTALES	107,00 m²

08

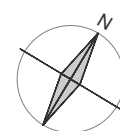


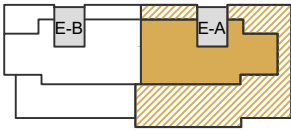


SUPERFICIES CONSTRUIDAS	
Sup. Construida vivienda	118,00 m ²
Sup. Construida terrazas	21,50 m ²
TOTALES	139,50 m²

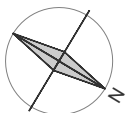
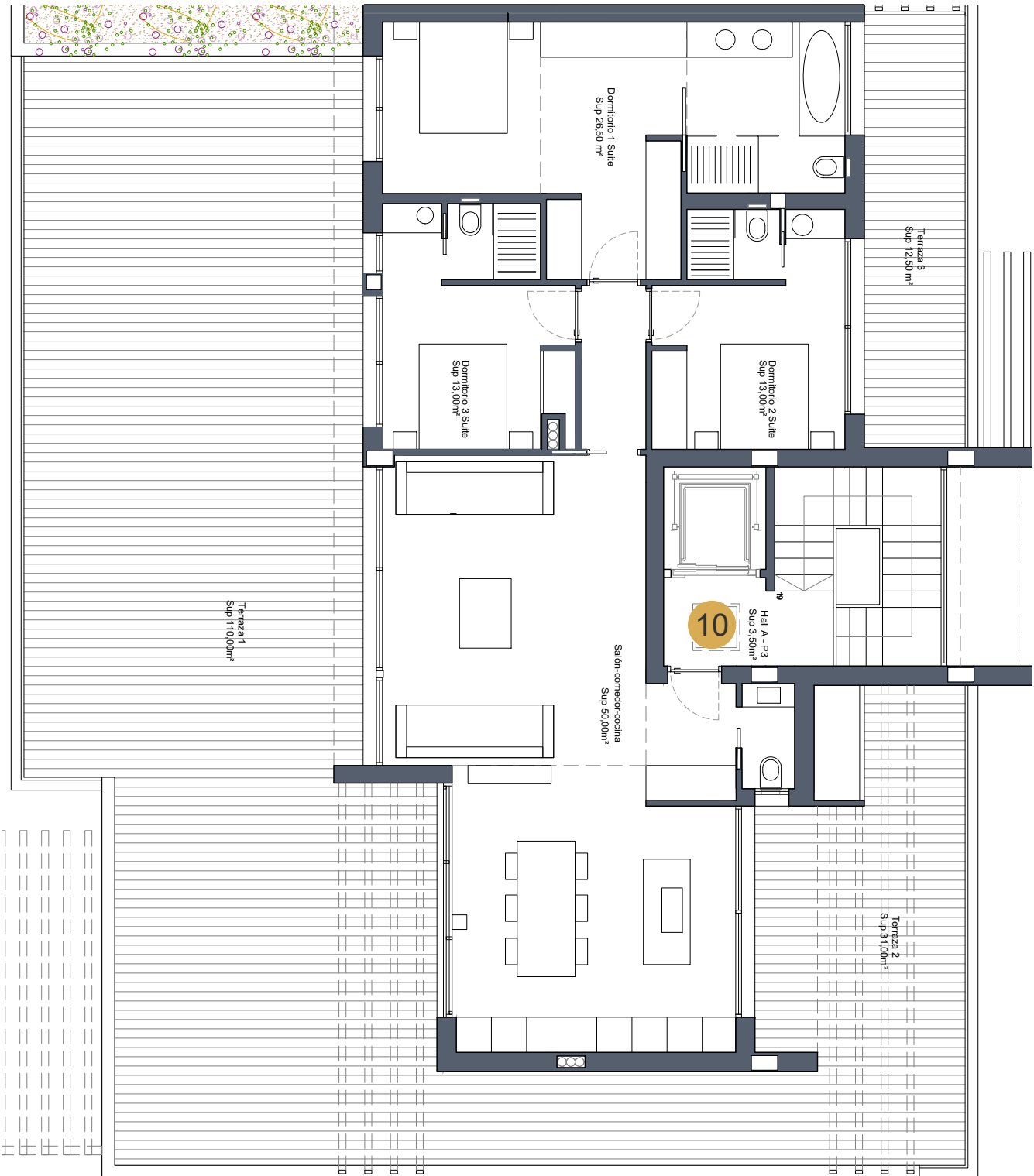


09





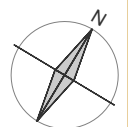
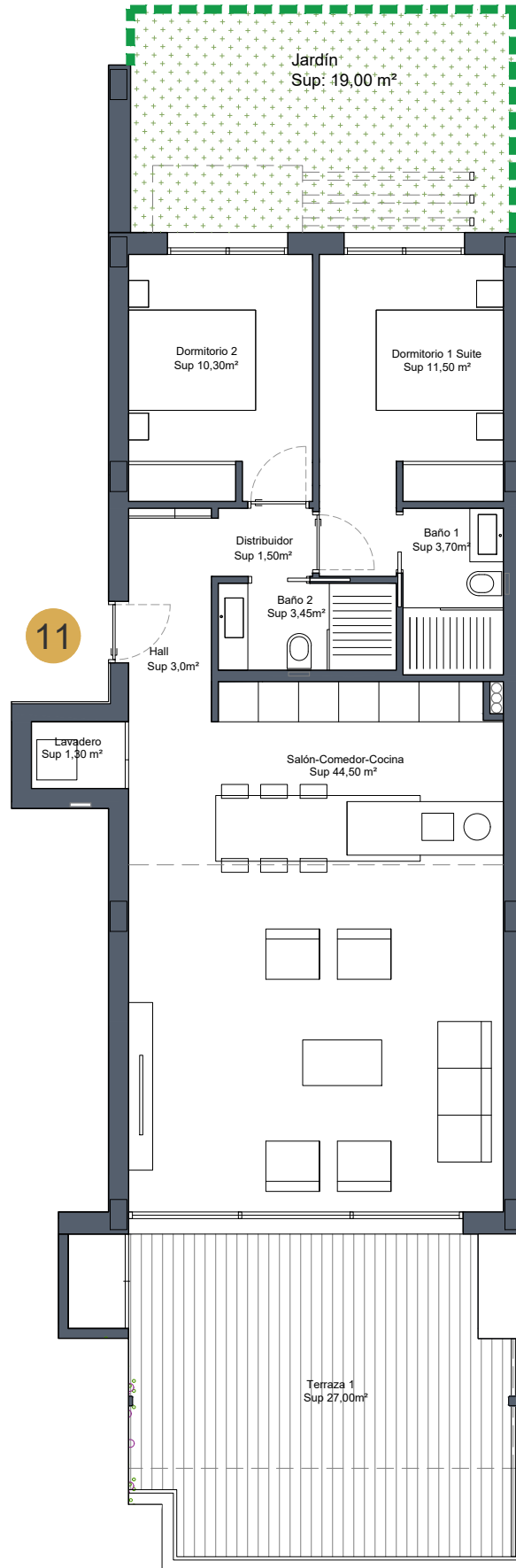
SUPERFICIES CONSTRUIDAS	
Sup. Construida vivienda	133,30 m ²
Sup. Construida terrazas	170,00 m ²
TOTALES	303,30 m²

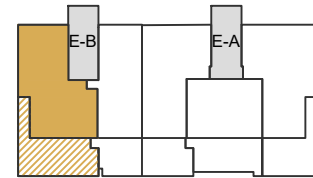
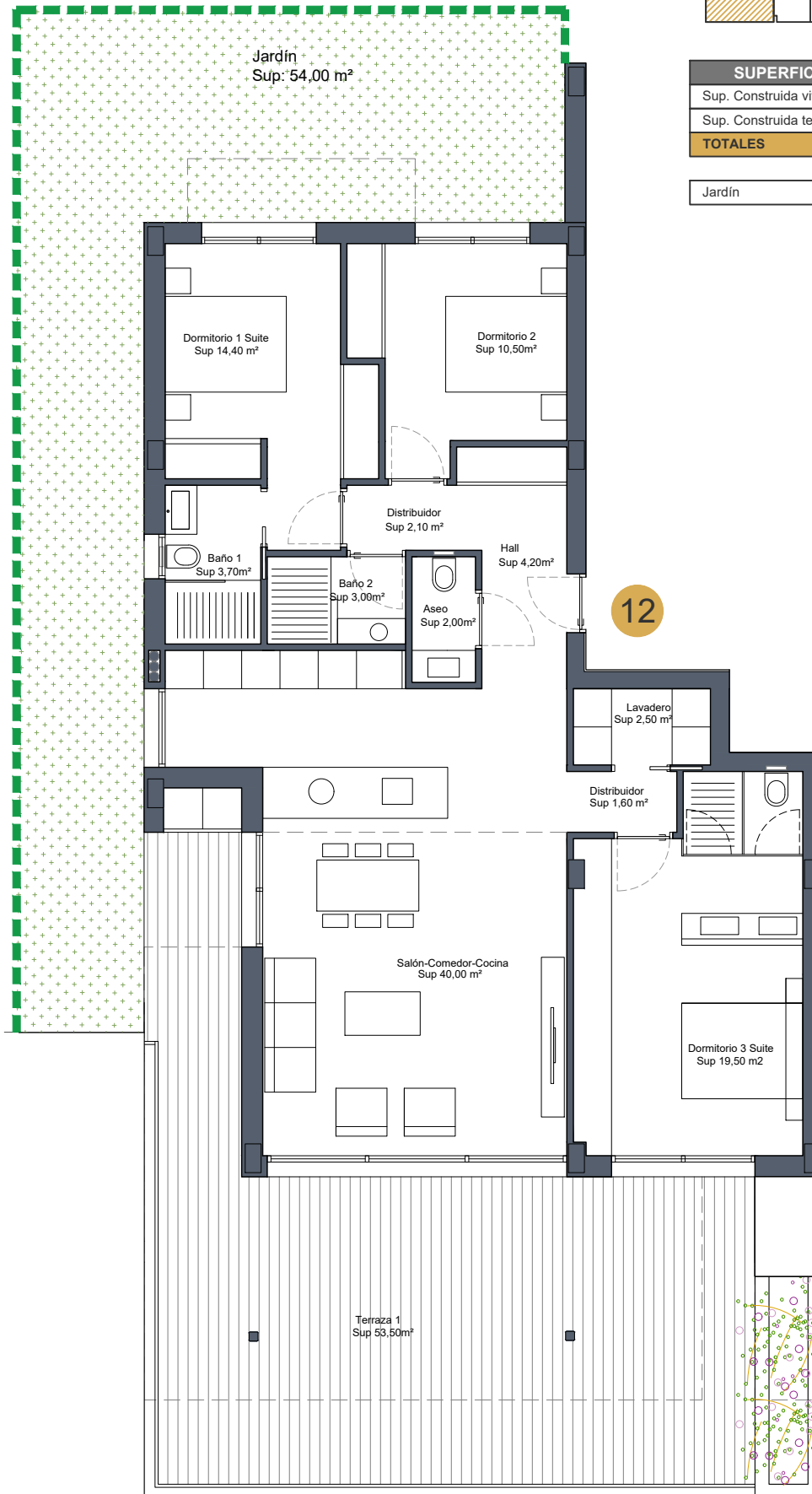




SUPERFICIES CONSTRUIDAS	
Sup. Construida vivienda	99,00 m ²
Sup. Construida terrazas	29,00 m ²
TOTALES	128,00 m²

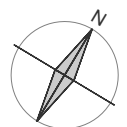
Jardín	19,00 m ²
--------	----------------------





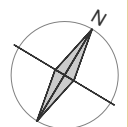
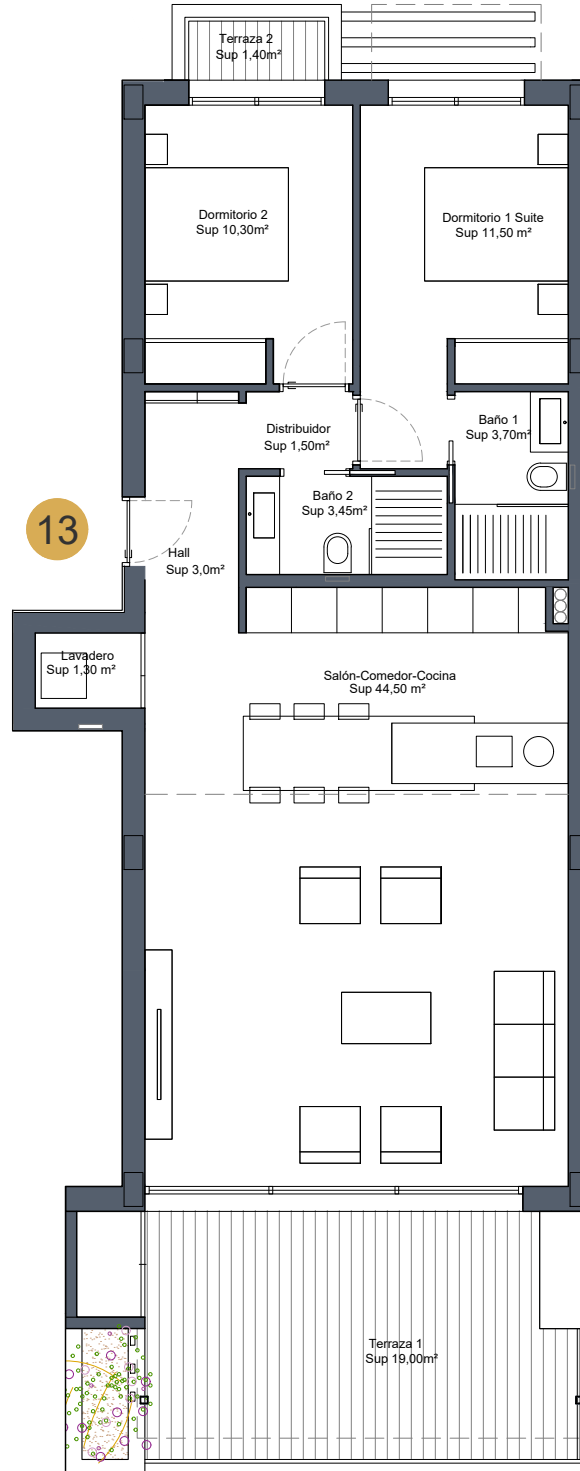
SUPERFICIES CONSTRUIDAS	
Sup. Construida vivienda	131,00 m ²
Sup. Construida terrazas	60,00 m ²
TOTALES	191,00 m²

Jardín	54,00 m ²
--------	----------------------



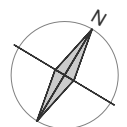
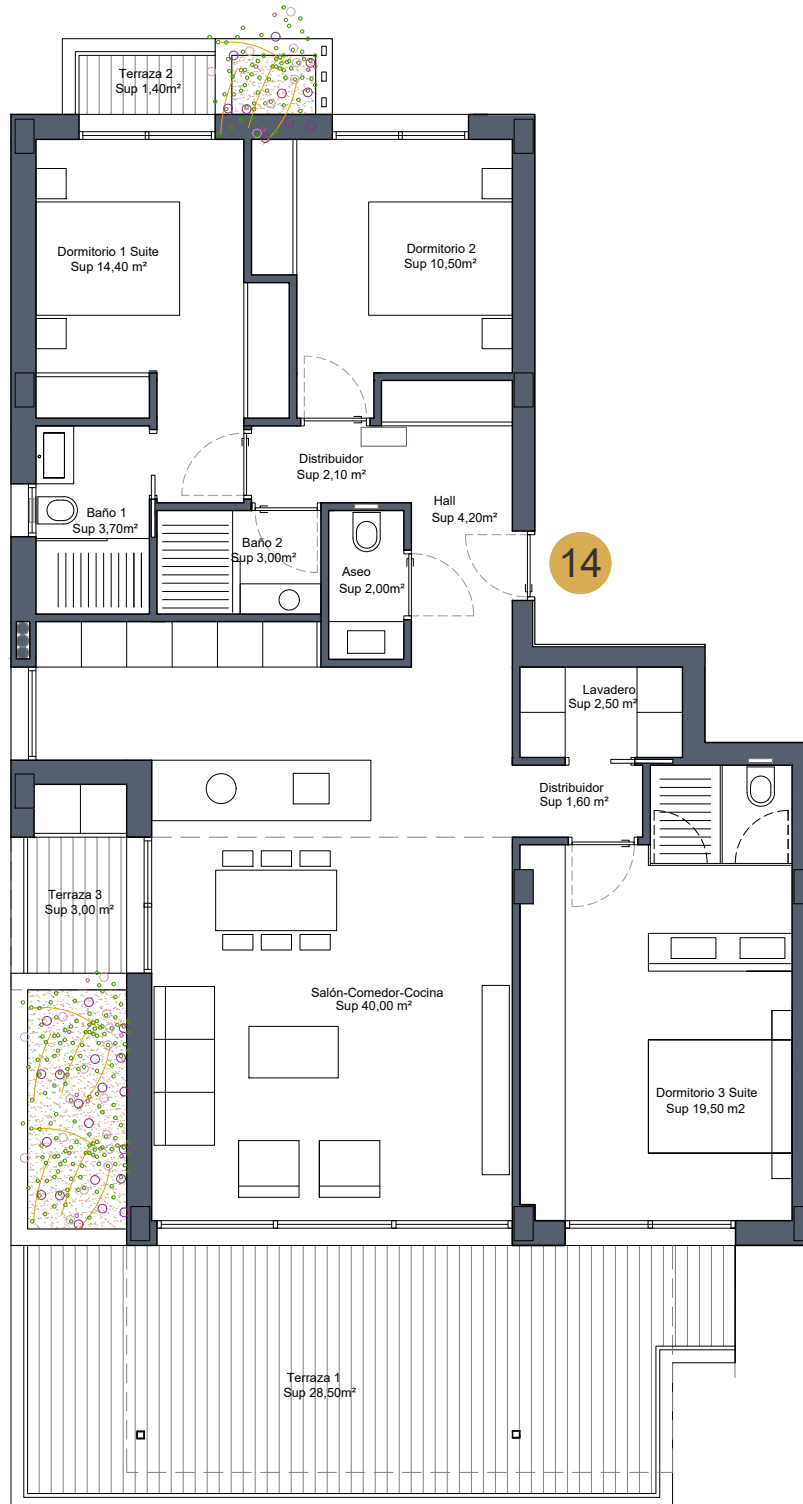


SUPERFICIES CONSTRUIDAS	
Sup. Construida vivienda	99,00 m ²
Sup. Construida terrazas	24,00 m ²
TOTALES	123,00 m²



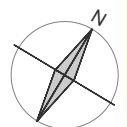
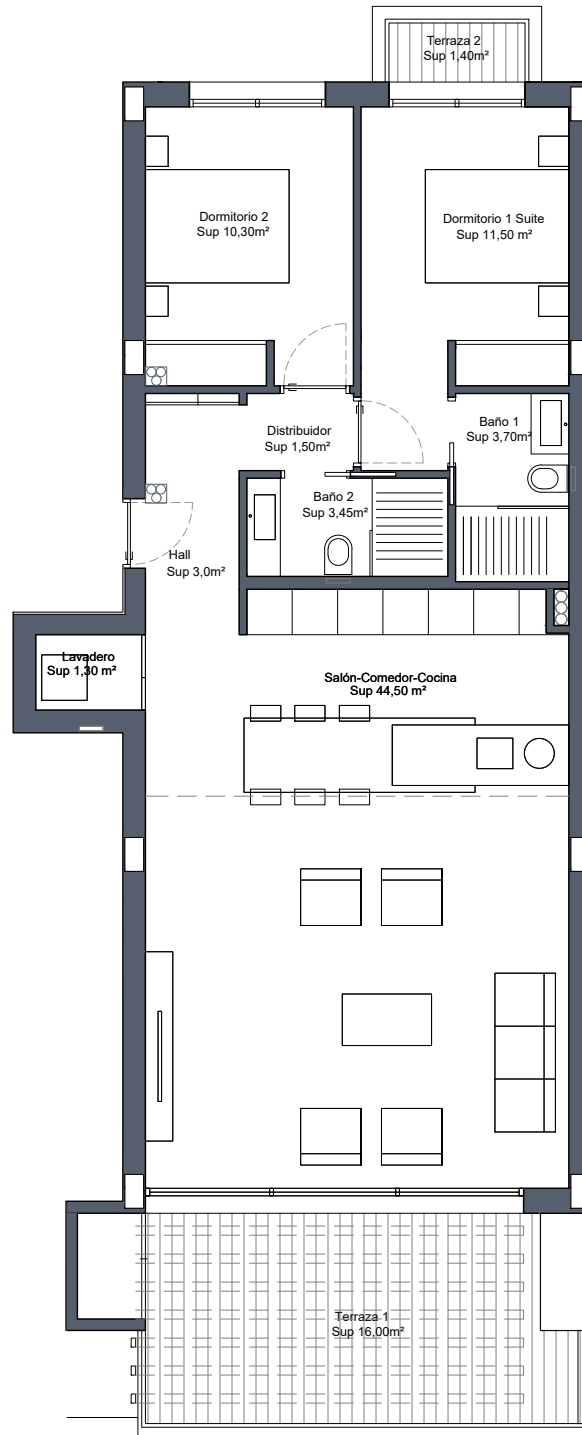


SUPERFICIES CONSTRUIDAS	
Sup. Construida vivienda	131,00 m ²
Sup. Construida terrazas	42,00 m ²
TOTALES	173,00 m²



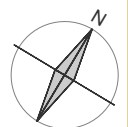
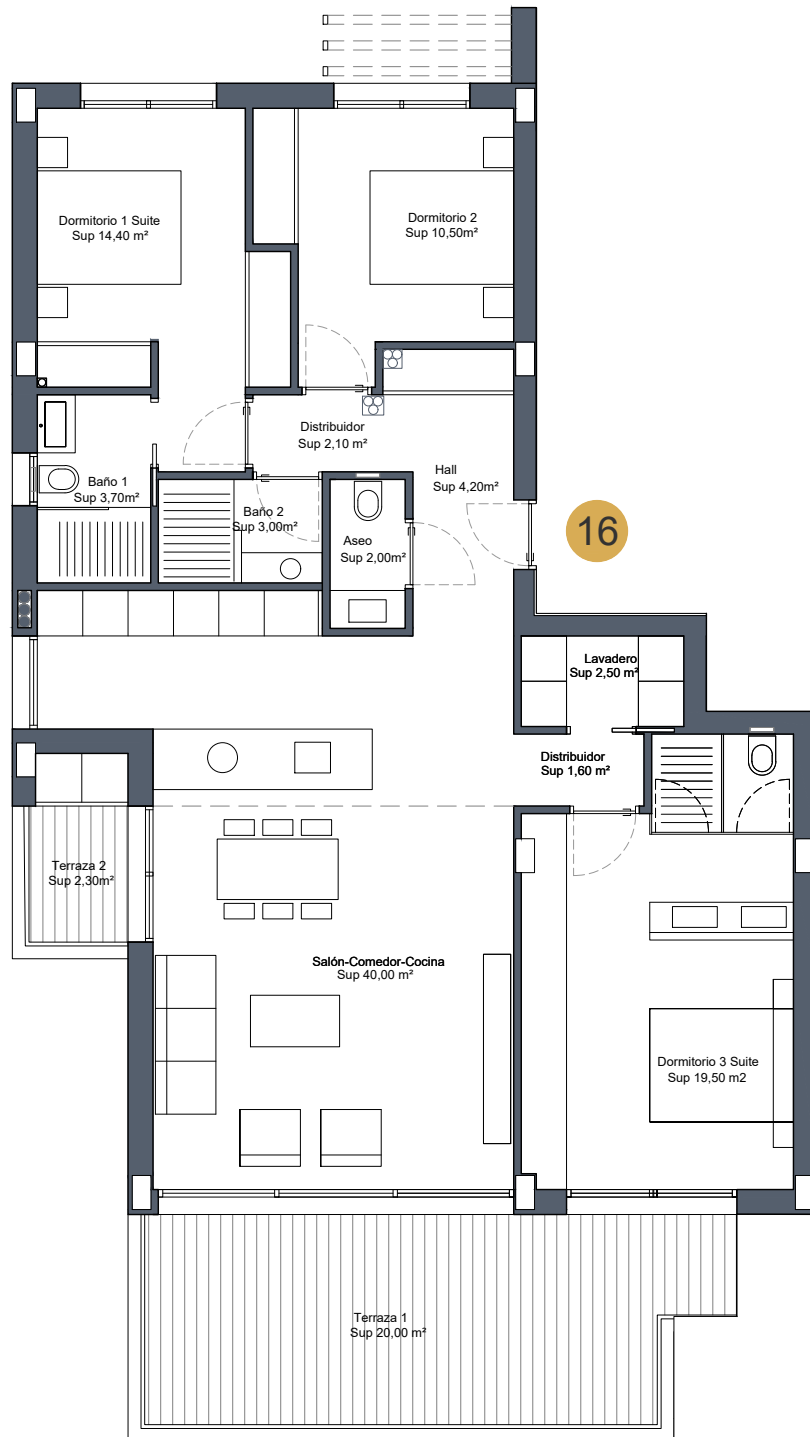


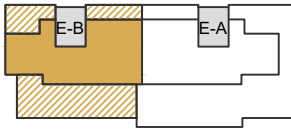
SUPERFICIES CONSTRUIDAS	
Sup. Construida vivienda	99,00 m ²
Sup. Construida terrazas	20,00 m ²
TOTALES	119,00 m²





SUPERFICIES CONSTRUIDAS	
Sup. Construida vivienda	131,00 m ²
Sup. Construida terrazas	26,00 m ²
TOTALES	157,00 m²





SUPERFICIES CONSTRUIDAS	
Sup. Construida vivienda	133,30 m ²
Sup. Construida terrazas	115,00 m ²
TOTALES	248,30 m²

